

ALO A SEMINAR

Landfill Planning

Tuesday 29th November
2016 – Daniel Fyfe



Hanson | Landfills - what role they will play under the Government's SWRRIP

Slide 1

Landfill Planning – Current Issues

Controlling Documents:

- SWRRIP – 2015 - 2045
- 7 Regional Waste and Resource Recovery Implementation Plans
- BPEM for Landfills

The concept of Environmental Justice

A Social Licence to operate

- CSIRO study

Encroachment

- Local Buffer Support Program
- Joint meeting with Ministers for Planning and Environment

Hanson | Landfills - what role they will play under the Government's SWRRIP

Slide 2

Landfill Planning

Controlling Documents

SWRRIP

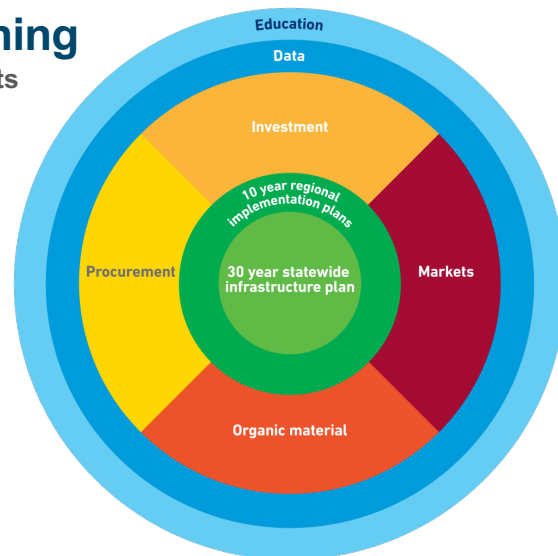
Victorian Waste and Resource Recovery Infrastructure Planning Framework objectives outlined in the *Environment Protection Act 1970*:

- a To ensure long term strategic planning for waste and resource recovery infrastructure at the state and regional levels; and
- b To facilitate the integration of statewide directions for the management of wastes and resource recovery infrastructure and regional infrastructure needs; and
- c To enable waste and resource recovery infrastructure planning to be:
 - i Effectively integrated with land use and development planning and policy; and
 - ii Effectively integrated with transport planning and policy; and
- d To ensure Sustainability Victoria and the waste and resource recovery groups work together to integrate the Statewide Waste and Resource Recovery Infrastructure Plan and the Regional Waste and Resource Recovery Implementation Plans; and
- e To enable waste and resource recovery infrastructure planning to be made at the appropriate level of the framework.

Landfill Planning

Controlling Documents

SWRRIP



Provide a statewide roadmap to ensure Victoria has the infrastructure to effectively manage the mix and volumes of waste for the next 30 years

Statewide Waste and Resource Recovery Infrastructure Plan

Identify infrastructure needs and how these will be met over the next 10 years for each waste and resource recovery region (7 in total)

Regional Waste and Resource Recovery Implementation Plans

Stimulate markets for recovered resources

Victorian Market Development Strategy for Recovered Resources

Improve the recovery of organic materials

Victorian Organics Resource Recovery Strategy

Facilitate investment for improved infrastructure

Investment Facilitation Framework

Facilitate collaborative procurement for infrastructure and services

Collaborative Procurement Framework

Improve the quality, timeliness and accessibility of data

Waste Data Governance Framework

Educate to reduce waste, increase recovery and improve community engagement

Community and Business Waste Education Strategy

Landfill Planning

Controlling Documents

SWRRIP

Environmental Justice

The principles of environmental justice are based on the concepts of equity and participation. The principles require that environmental benefits and impacts should be distributed proportionately and affected communities should be able to participate in decision making.

For waste and resource recovery planning in Victoria, this means the community must be involved in determining the waste and resource recovery priorities and have opportunities to participate in the decisions and long term planning to establish a safe, integrated waste and resource recovery system.

Landfill Planning

Controlling Documents

SWRRIP



Hanson | Landfills - what role they will play under the Government's SWRRIP

Slide 7

Landfill Planning

Controlling Documents

Metropolitan Waste and Resource Recovery
Implementation Plan 2016

Regional Waste Management Plans (Draft)



Hanson | Landfills - what role they will play under the Government's SWRRIP

Slide 8

Landfill Planning

Controlling Documents

Metropolitan Waste and Resource Recovery

Implementation Plan 2016

Section 17 Contingency Planning



Landfill Planning

Controlling Documents - BPEM

The performance requirements for landfills are well established with the Best Practice Environmental Management Guidelines, Siting, design, operations and rehabilitation of landfills, Publication 788.3 August 2015 (125 pages)

Siting, design, operation and rehabilitation of landfills



Publication 788.3* August, 2015.
Authorised and published by Environment Protection Authority Victoria.
200 Victoria Street, Carlton, 3053.

* This replaces publication 788.2, released October 2014. It incorporates the changes set out in the 'Variation to the Best Practice Environmental Management - Siting, Design, Operation and Rehabilitation of Landfills (EPA Victoria publication 788)', as published in the Victorian Government Gazette on 8 October 2014.

BPEM

APPENDIX A: Summary of implementation requirements

Section	Implementation requirements
Siting	<p>To be implemented by the Metropolitan Waste Management Group through the implementation of Part 3 (Metropolitan Landfill Schedule) of its Metropolitan Waste and Resource Recovery Strategic Plan.</p> <p>To be implemented by all Regional waste management groups through the implementation of their regional waste management plans.</p> <p>To be implemented by all planning authorities in making their planning decisions on closed, current or future landfills.</p>
Design of landfill liners (for the base, side walls and landfill capping systems)	All new landfills and cells to implement, except the landfill cells that are already approved and partially filled.
Design	All new landfills and cells to implement
Operation	All landfills are to implement an auditor-verified monitoring program by 30 June 2011 to enable submission of 2010-11 annual performance statement.
Rehabilitation and Aftercare	<p>All landfills to implement during progressive rehabilitation and upon closure.</p> <p>Currently closed and capped landfills to implement on the basis of risk assessment by auditor, where the rehabilitation and/or aftercare is, or is likely to be, inadequate to guard against pollution.</p>

Project Partner Workshop Summary Report: CSIRO Research Project October 2016 - Update

Background

SV has entered into a research partnership with CSIRO to explore factors that build community trust in the waste and resource recovery sector. Learnings from the project will provide evidence base for further work to help build trust in the sector.

The project will:

- Understand and measure community attitudes and perceptions about waste, its management and the sector
- Identify drivers and their importance for building trust and achieving community acceptance of the sector and its operators, facilities and activities
- Recognise contextual variables that influence the levels of trust and acceptance e.g. type and / or location of facility
- Create opportunities for industry collaboration to shape behaviour among community and within the sector.





Project phases and current stage highlighted:

Late 2015	Preparation and planning
Early 2016	Project partner workshops and interviews to find out factors that influence social acceptance of waste facilities and involved: <ul style="list-style-type: none"> 7 partners who own, operate, plan and regulate waste facilities as well as community groups affected by waste management of the site Approx 50 people – 35 community reps and 18 other (industry operators, consultants, NGOs, local government, planners and regulator).
Mid 2016	Survey to find out perceptions of waste and resource recovery and involved: <ul style="list-style-type: none"> 1200 people– 600 in close proximity to facilities and other 600 not.
August 2016	Workshops with project partners to discuss research findings to date and design initiatives / solutions and involved: <ul style="list-style-type: none"> 2 briefings: industry / government and community 1 joint stakeholder workshop that invited industry, government and community.
September 2016	Consultation with project partners and waste industry based on this workshop summary report and specifically about the co-designed initiatives / solutions to enhance trust and acceptance of the waste and resource recovery sector.
November 2016	Draft CSIRO Research Project Report consultation with project partners and industry <ul style="list-style-type: none"> Report includes all research findings, workshop summary report and proposed initiatives / solutions.
December 2016	Final CSIRO Research Project Report submitted to Minister for early 2017 release.

Exploring community expectations and perceptions about waste and resource recovery

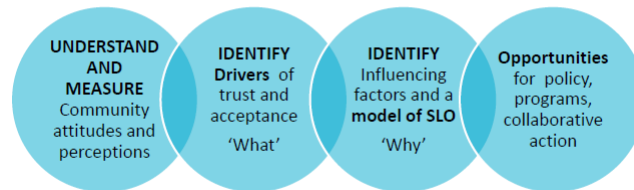
CSIRO SV joint project

Research Team

Dr Andrea Walton (Project Leader)	Dr Justine Lacey	Dr Rod McCrea	Ms Talia Jeanneret
			

Other collaborators: Mr Mark Smith, Sustainability Victoria; Dr Kieren Moffat, CSIRO

Four Project Aims



1. Explore and document community perceptions and expectations

- Community discussion groups
- Key Informant interviews: Industry and govt
- Based around 7 sites

2. Measure attitudes, perceptions, trust, acceptance

- State-wide survey
- Sample: 'ordinary' Victorians, and residents around WRR infrastructure

3. Feedback Findings and Identify collaborative actions

Project phases



Phase 2: Community group discussions and key informant interviews

Based around 7 sites

- Site 1: Werribee Landfill
- Site 2: Brooklyn Precinct
- Site 3: Clayton Precinct
- Site 4: Hampton Park Landfill
- Site 5: Wollert Hanson Landfill
- Site 6: Bulla Organics Facility
- Site 7: Mildura Rural City Landfill

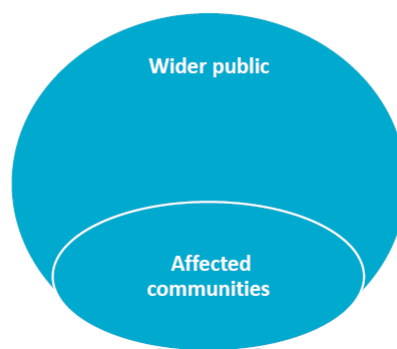
Criteria for selection

- Criteria 1** Type of Operator
- Criteria 2** Location
- Criteria 3** Size of the facility
- Criteria 4** Facility function
- Criteria 5** Community engagement
- Criteria 6** Future plan

57 participants: 38 Community, 18 Key informants

TYPES	NUMBER	COMMENTS
Community representative groups	37	<ul style="list-style-type: none"> 4 x groups based around existing site-specific community reference groups 3 x group and 3 interviews based around existing community groups in the local govt area
Operators	9	Cleanaway, Veolia, SUEZ, Hanson, Wyndham City Council, Mildura Rural City Council, 5-Councils (Clayton)
Consultants and NGOs	3	Community Engagement professionals Environment Victoria
Local Council	2 (+5)	Five other participants were from local councils but included under the 'Operator' group
Planners	5	Metro WRGG, Regional WRGGs, Dept State Infr and Plan, SV
Regulators	1	EPA
TOTAL	57	37 x Community representatives 20 x Others

What we found: Two levels of society involvement



What we found:

1. Issues most important to affected communities

- **Impacts on wellbeing** – particularly dust and odour
- **Operational compliance** - with licences, permits, and best-practice
- **Responding quickly** to community concerns
- Treated as **a true stakeholder**
- **Future plans** for the sites

2. The role of trust

What factors underpin trust

- **Responsiveness** – taking action as quickly as possible
- **Operators prepared to engage and work with community**
- **Being open, honest, and transparent** in dealing with community
- **Demonstrating a genuine commitment** to finding solution

What undermines trust

- **Lack of transparency**, which contributes to **lack of credibility**
- **Lack of action and communication** when things go wrong
- **Inconsistency**
- Once trust is eroded it can be a long process to rebuild

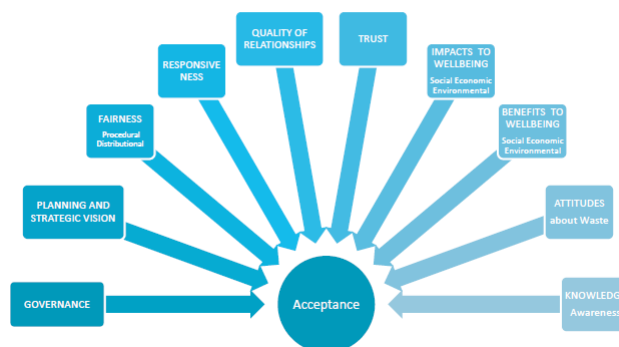
3. Expectations

- Operators
- Regulators
- Government

4. General attitudes

- Revolved around service expectations
- Concern for amount of waste generation particularly re packaging
- Trust issues – in recycling
- Low levels of awareness of waste management and issues for affected communities

Findings: Factors that influence social acceptance



Encroachment

Local Buffer Support Program

MWRRG is delivering the Local Government Buffer Support Program over four years (2014-17) in collaboration with local government, and key Victorian Government agencies.

The buffer project objectives?



Encroachment

Local Buffer Support Program

What will the buffer support program provide?



Encroachment

Local Buffer Support Program

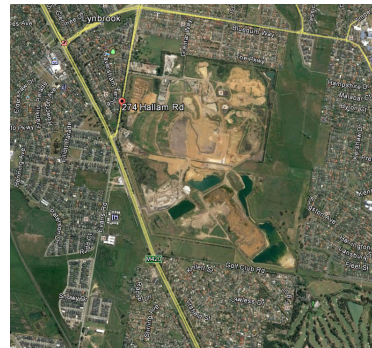
Why are buffers important?



Encroachment

Local Buffer Support Program

Why are buffers and encroachment the key challenge?



End